

by Mark Pack 5 years ago

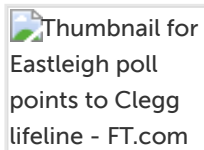
Eastleigh by-election: 26 February - Ashdown does micro-micro-targeting

Let's start this time with the latest poll:



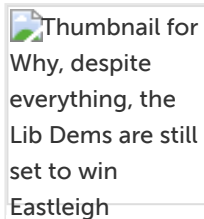
Lord Ashcroft: Liberal Democrats 5% ahead in Eastleigh

With two days to go, the Liberal Democrats have the edge in the Eastleigh by-election. My latest poll finds a 5-point lead for Mike Thorn...



Eastleigh poll points to Clegg lifeline - FT.com

The Liberal Democrats remained confident of victory in this week's Eastleigh by-election as a new opinion poll suggested the contest coul...



Why, despite everything, the Lib Dems are still set to win Eastleigh

A new poll from Lord Ashcroft putting the Lib Dems five points ahead in the by-election shows that local issues continue to take preceden...



Meanwhile, Paddy Ashdown has deployed his Mandarin skills in the sort of micro-micro-targeting that political campaigners dream of:



Eastleigh byelection: Lib Dems deploy Paddy Ashdown in charm offensive

It felt like the sort of day for a battle-hardened scrapper to enter the fray. Paddy Ashdown, the former Lib Dem leader and ex-marine, du...



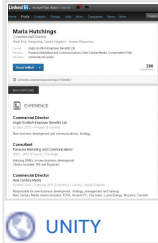
And of course Maria Hutchings has been in the news again, not in a good way again:



Tories' "business woman" candidate has never run a company

10:53am Tue February 26th The Tories' candidate in Eastleigh appears never to have run a company - despite repeated claims that she is a ...





More questions about Maria Hutchings's CV | Liberal Conspiracy

12:28 pm - February 26th 2013 Political Scrapbook has revealed this morning that, despite presenting herself as an experienced business w...

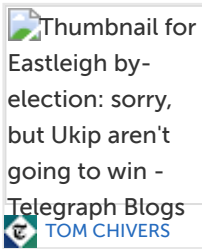
As for the other parties in the contest...



 SEBASTIAN PAYNE

Labour are the real losers in Eastleigh

The Lib Dems are still on course to hold Eastleigh. Despite the loss of Britain's AAA credit rating and the unfurling Rennard scandal, Lo...




Eastleigh by-election: sorry, but Ukip aren't going to win - Telegraph Blogs

It's as though Nate Silver never existed, it really is. Michael Crick, the Channel 4 News political correspondent, tweeted a little while...

And finally, a piece of good news for the Liberal Democrats given the party's historic strong postal vote organisation in Eastleigh:



Eastleigh Council say 9,485 postal votes have now been returned, which is about 12 per cent of electorate

 5 YEARS AGO